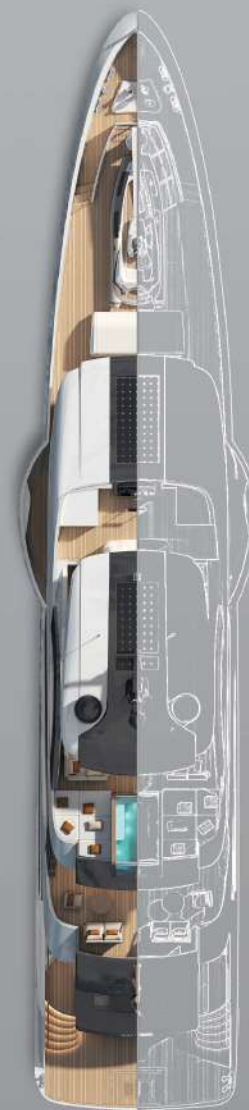


MAJESTY 160





OUR STORY

A testament to fine craftsmanship and 4 decades of yacht building experience, the Majesty 160 is an ode to the legacy of Gulf Craft and Gulf Craft's chairman – Mr. Mohammed Hussein Alshaali. Her harmonious proportions will redefine and inspire all upcoming products from Gulf Craft's Majesty fleet.



BESPOKE ART

The Italian studio - Cristiano Gatto Design with its extensive knowledge in developing yachts of 50m length reciprocated remarkably in realizing Mr. Mohammed's vision of a sub 500GT vessel. The immeasurable yachting experience of Mr. Alshaali served as the perfect catalyst while CGD penned the Majesty 160 lines.



FORMIDABLE PERFORMANCE

A highly efficient and patented fast displacement hull from industry-leading Dutch naval architects – Van Oossanen, gives her an impressive top speed of 19 Knots and a fantastic range of 4200NM at 10 Knots. Being true to Gulf Craft's technological pedigree and resolute devotion to safety standards, the M160 is equipped with state-of-the-art systems for optimum safety.



BRAZEN OPULENCE

Countless perks of a plush superyacht – an 80sqm beach club aft with fold-out terraces, a 100sqm of unhindered flush deck forward of wheelhouse with dedicated crane, tender and toys storage, an infinity pool/ jacuzzi on upper deck aft, and a massive 110sqm flybridge with breath-taking views comfortably sheltered under a gigantic hardtop are merely some of the features that set the M160 far beyond competition.



REFINED AESTHETICS

Majesty 160's exterior design draws subtle cues from her elder sibling – Majesty 175, the world's largest fibreglass production yacht. Her flowing lines resonate well with the inherent Majesty aesthetics and the play of black coloured details on a white FRP superstructure provides an excellent contrast to her formidable persona.





MAIN SALON

Maximised glazing expands flood the interiors with abundant natural light which is further amplified by high gloss finishes and beautiful wooden accents.



MAIN DINING

Melodious play of natural and artificial lighting, intricately designed fixtures, exquisite textures, and unique patterns underscore the predominant theme for her interiors.





MASTER SUITE

50sqm plus footprint with a 11sqm Bathroom, 14sqm of owner's lounge, 9 sqm of wardrobe space, and an optional balcony are all a tribute to her palatial grandeur.





OWNER'S LOUNGE

A sumptuous blend of abundant spaces,
large windows, and homely comforts
onboard



MATERIAL PALETTE

M160's carefully selected materials and meticulously hand crafted details are a testament to the fine craftsmanship and bespoke yacht construction of Gulf Craft.



WHITE ONYX
natural marble polished finish



CADORIN
cortec oak with white yellow gold dust



TEAK WOOD
high gloss finish



TAIPING
hall 1



LEALPELL
thema col white 5010



STAINLESS STEEL
polished finish



SPESSART
oak wood



MARINE LEATHER
pandora zipper white stitching aurifil



VERSATILE SUPERYACHT

Packaged under 500GT, the Majesty 160 is truly a masterpiece of functionality, space, and unabashed luxury within the confines of a cost-efficient, easy to maintain, and exceptional charter-friendly superyacht.

GENERAL ARRANGEMENT



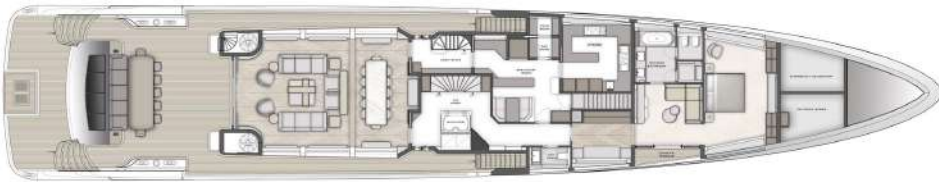
PROFILE



SUN DECK



UPPER DECK



MAIN DECK



LOWER DECK

MAIN CHARACTERISTICS

Dimensions

164'
50 Meters
Length Overall

29' 5"
9 Meters
Beam

7' 5"
2.3 Meters
Draft

Design

HULL TYPE	Mono Hull
HULL MATERIAL	Fiber Reinforced Plastics (FRP)
STRUCTURE MATERIAL	Fiber Reinforced Plastics (FRP)
YACHT TYPE	Super Yacht
MAXIMUM (all passengers+Crew)	14+10
GROSS TONNAGE	498 GT-TBC
DISPLACEMENT	420T
LENGTH WATERLINE	149' 6" 45.6m

Tank Capacities

FUEL CAPACITY	FRESH WATER CAPACITY	GREY WATER CAPACITY	BLACK WATER CAPACITY
10,817US. GALLONS 40,950 LITERS	4,025US. GALLONS 15,240 LITERS	1,289US. GALLONS 4,860 LITERS	1,289US. GALLONS 4,880 LITERS

Machinery

ENGINES	Twin MTU 16V-2000 HP, 1630KW, 2450 RPM Combined with SCR
GENERATOR	Two 100W, 230/400V AC, 50 Hz, 3-Phase

Performance

TOP SPEED	19 knots*
CRUISING SPEED	12 knots*
RANGE @ 10 knots*	4,200nm

*Speed and range estimates may vary depending on cleanliness of hull, and sea conditions

